



#filmlosalamos

Scene It in the

Movies



LOS ALAMOS LOCATION SERVICES

The Los Alamos Film Liaison provides film and television production support, including location scouting, resource referrals, liaison support between local public safety officials and production crews, and other services to facilitate the cost-effective and efficient operations required by the industry. The Film Liaison also works closely with the State Film Office and regional film advocacy initiatives to promote filming in Northern New Mexico locations.



LOS ALAMOS COUNTY FILM OFFICE

Kelly Stewart
505-662-8087
kelly.stewart@lacnm.us

Los Alamos, New Mexico





in the *Movies*

COMING SOON:

Los Alamos: Scene It In the Movies, a digital site with maps, photos and data that lets you visit the actual locations shown in movies filmed in Los Alamos!—as well as links to film location services and adjacent hospitality businesses!

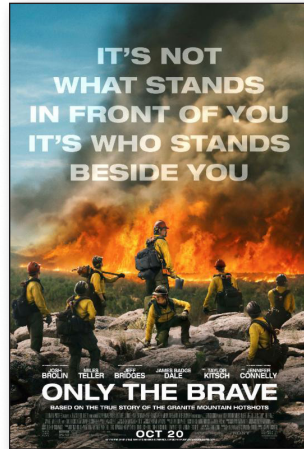
For a map of Los Alamos Film Locations, contact Los Alamos County Film Liaison, Kelly Stewart, at kelly.stewart@lacnm.us.



MYSTERIES AT THE MUSEUM 2018

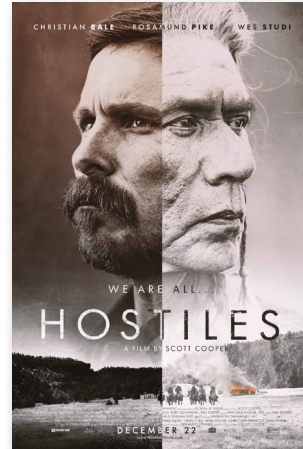
Travel Channel Series

Host: Don Wildman



ONLY THE BRAVE 2017

Josh Brolin
Miles Teller
Jeff Bridges
Jennifer Connelly
Taylor Kitsch



HOSTILES 2017

Christian Bale
Rosamund Pike
Wes Studi



GODLESS 2017

Netflix Limited Series

Jack O'Connell
Michelle Dockery
Jeff Daniels



THE BRAVE 2017

NBC Television Series

Anne Heche



LONGMIRE 2017

Nefflix Series

Robert Taylor
Katee Sackhoff
Lou Diamond Phillips



NEW YORK PRISON BREAK The Seduction of Joyce Mitchell 2017

Lifetime Movie
Penelope Ann Miller
Joe Anderson



OUTLAW PROPHET: WARREN JEFFS 2014

Lifetime Movie

Tony Goldwyn
Molly Parker
Martin Landau
David Keith

HELLBENT

2018

Just completed production!

Martin Henderson
Isabelle Fuhrman
Max Martini



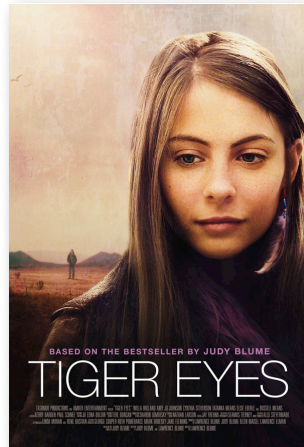
For the highly acclaimed 2014-2015 television series *Manhattan*, a fictional account of the lives and the families of the scientists who raced to build the first atomic bomb before the Nazi's, film makers consulted with Lab historians to recreate Los Alamos historical buildings on a special set in Santa Fe.



THE LONE RANGER

2013

Johnny Depp
Armie Hammer



TIGER EYES

2012

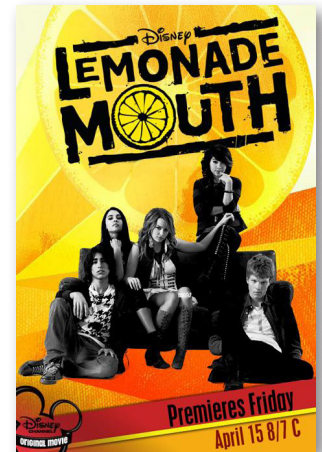
Willa Holland
Amy Jo Johnson
Cynthia Stevenson



HAYWIRE

2011

Gina Carano
Ewan McGregor
Bill Paxton
Michael Fassbender



LEMONADE MOUTH

2011

Bridget Mendler
Adam Hicks
Hayley Kiyoko



LET ME IN

2010

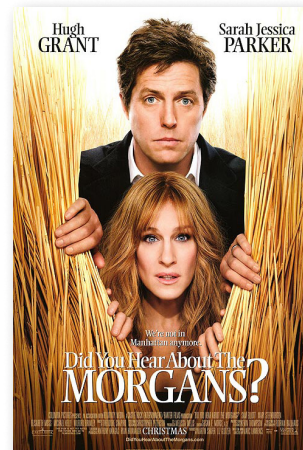
Chloe Grace Moretz
Kodi Smit-McPhee
Richard Jenkins



BROTHERS

2009

Natalie Portman
Jake Gyllenhaal
Tobey Maguire



DID YOU HEAR ABOUT THE MORGANS?

2009

Sarah Jessica Parker
Hugh Grant



THE MISSING

2003

Tommy Lee Jones
Cate Blanchett
Evan Rachel Wood



Welcome to

Los Alamos



#FILMLOSALAMOS

Los Alamos, New Mexico is a mountain town located just 33 miles northwest of Santa Fe. Home to the Los Alamos National Laboratory, this incorporated city and county was developed during World War II at the foot of the Jemez Mountains for the Manhattan Project. As a result, Los Alamos offer unique landscapes, seasonal weather, and housing stock that provide the locations film makers are seeking.

On film, Los Alamos landscapes and structures have served as upstate New York (*Haywire* and *New York Prison Break*, *The Seduction of Joyce Mitchell*), northern California (*Brothers*), Wyoming (*Longmire*, *Did You Hear About the Morgans?*), the Montana/Canada border (*Hellbent*), Arizona (*Only the Brave*), the "wild west" (*Godless*, *Hostiles*, *The Lone Ranger*, *The Missing*) and even Mongolia, China (*The Brave*). Los Alamos has also played itself in the films *Let Me In* and *Tiger Eyes*, as well as the Travel Channel series *Mysteries at the Museum*.

These film friendly locations are also some of Los Alamos' most scenic recreational assets!

PAJARITO MOUNTAIN skipajarito.com

Ski, hike, bike this all season mountain and enjoy bands and brews at the lodge!

SCENE IT: *Godless*, *Hostiles*, *Let Me In*, *Longmire*, *Only the Brave*, *The Brave*, *The Lone Ranger*

GATEWAY TO THREE NATIONAL PARKS:

VALLES CALDERA NATIONAL PRESERVE

nps.gov/valle

Play on a supervolcano with a Valle Grande (big valley) offering biking, hiking, cross-country skiing, sleigh rides, nature watching and more, depending on the season.

SCENE IT: *Longmire*, *The Lone Ranger*

BANDELIER NATIONAL MONUMENT nps.gov/band

Walk in the footsteps of Ancient Puebloans, on trails and up ladders to cave dwellings

MANHATTAN PROJECT NATIONAL HISTORICAL PARK

nps.gov/mapr

Learn about life in the "secret city" during World War II by visiting the Bradbury Science Museum, the Los Alamos History Museum, the Los Alamos Nature Center, Historic Fuller Lodge and Ashley Pond Park!

SCENE IT: *Brothers*, *Lemonade Mouth*

Go to **VISITLOSALAMOS.ORG** for a full list of attractions, itineraries and hospitality services!